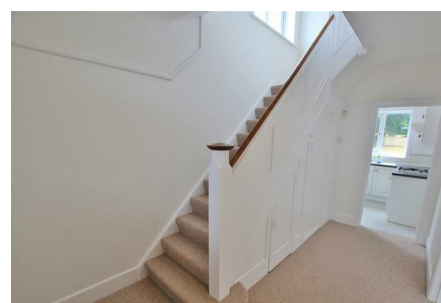


Normanhurst Avenue, Queens Park, Bournemouth, Dorset BH8 9NN



Asking Price £550,000 Freehold



A well-presented THREE BEDROOM DETACHED FAMILY HOME situated in a sought-after tree-lined road within the highly desirable Queens Park area. This attractive property offers generous living space, a private garden and excellent access to outstanding schools, transport links and local amenities.

Property Description

This charming detached home provides bright and versatile accommodation ideal for family living. The ground floor features a spacious entrance hall leading to a well-proportioned living room, perfect for relaxing or entertaining, alongside a separate dining room with views over the garden. The kitchen is well-appointed with ample storage and workspace, with potential for extension or reconfiguration (subject to permissions).

Upstairs, the property offers three bedrooms and a family bathroom.

Externally, the home benefits from a private rear garden, ideal for outdoor dining and family use, as well as off-road parking and a well-maintained frontage.

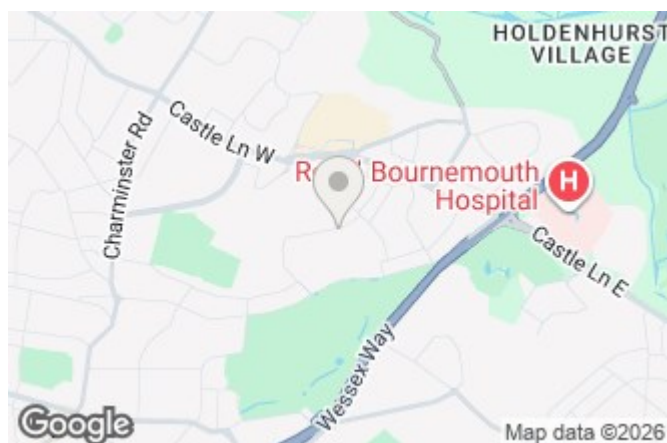
This three bedroom house is located in the sought after location of Queens Park. The property is within a short walk of the shopping facilities and bus routes at nearby Castle Point and also provides easy access to the Wessex Way by car.

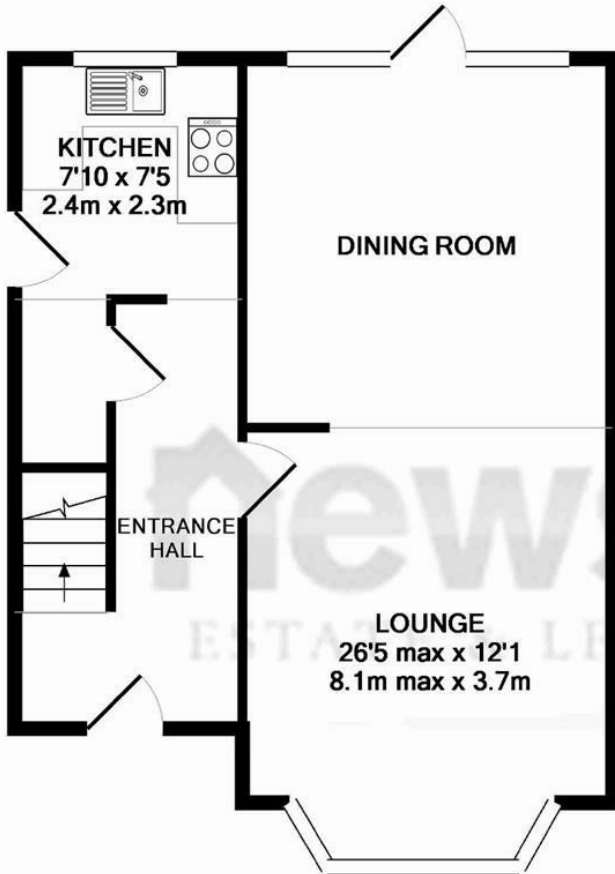
The accommodation consists of a large bright lounge/diner with double aspect windows and a small kitchen on the ground floor. Upstairs there are two good sized double bedrooms and a third single bedroom as well as a bathroom with new shower over bath and a separate WC.

Outside there is a front driveway and access gate leading to the rear garden which is mostly laid to lawn areas and paving.

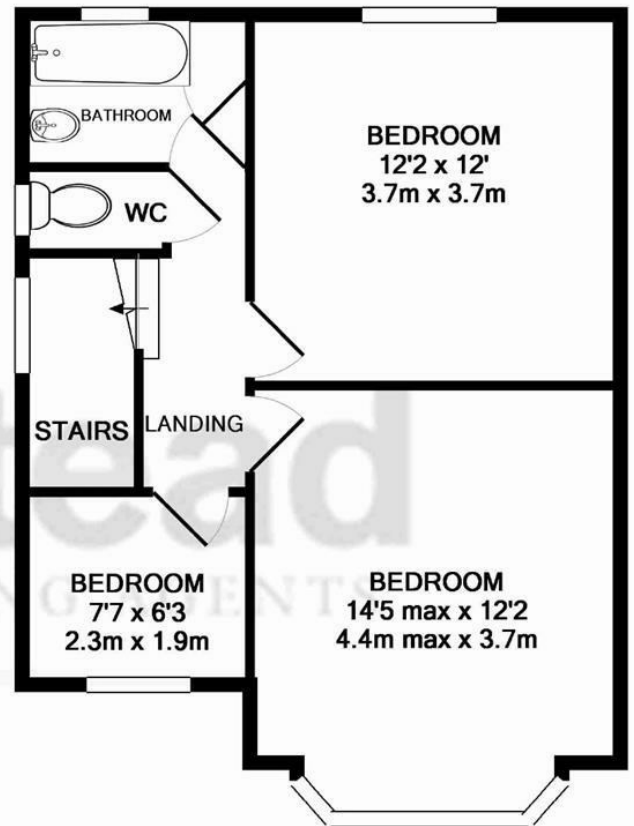
This would make an ideal rental property for anyone working at the nearby JP Morgan offices or Bournemouth Hospital without the need to drive to work.

Bournemouth Borough Council Tax Band D.





GROUND FLOOR
APPROX. FLOOR
AREA 474 SQ.FT.
(44.0 SQ.M.)



1ST FLOOR
APPROX. FLOOR
AREA 474 SQ.FT.
(44.0 SQ.M.)

TOTAL APPROX. FLOOR AREA 948 SQ.FT. (88.0 SQ.M.)

Whilst every attempt has been made to ensure the accuracy of the floor plan contained here, measurements of doors, windows, rooms and any other items are approximate and no responsibility is taken for any error, omission, or mis-statement. This plan is for illustrative purposes only and should be used as such by any prospective purchaser. The services, systems and appliances shown have not been tested and no guarantee as to their operability or efficiency can be given

Made with Metropix ©2015

